

OLYMPUS

Precision in the Periphery
BF-UCP190F
EBUS Bronchoscope



BF-UCP190F

Precision in the Periphery

Reach and Sample Deeper Lung Regions with EBUS-TBNA

The BF-UCP190F is designed to achieve precise sampling with real-time ultrasound visualization in deeper lung regions which may facilitate the delivery of a diagnostic assessment.¹ The small outer diameter of 5.9 mm enables pulmonologists to extend their diagnostic reach while maintaining procedural simplicity for efficient lung cancer diagnosis.

Features and Benefits

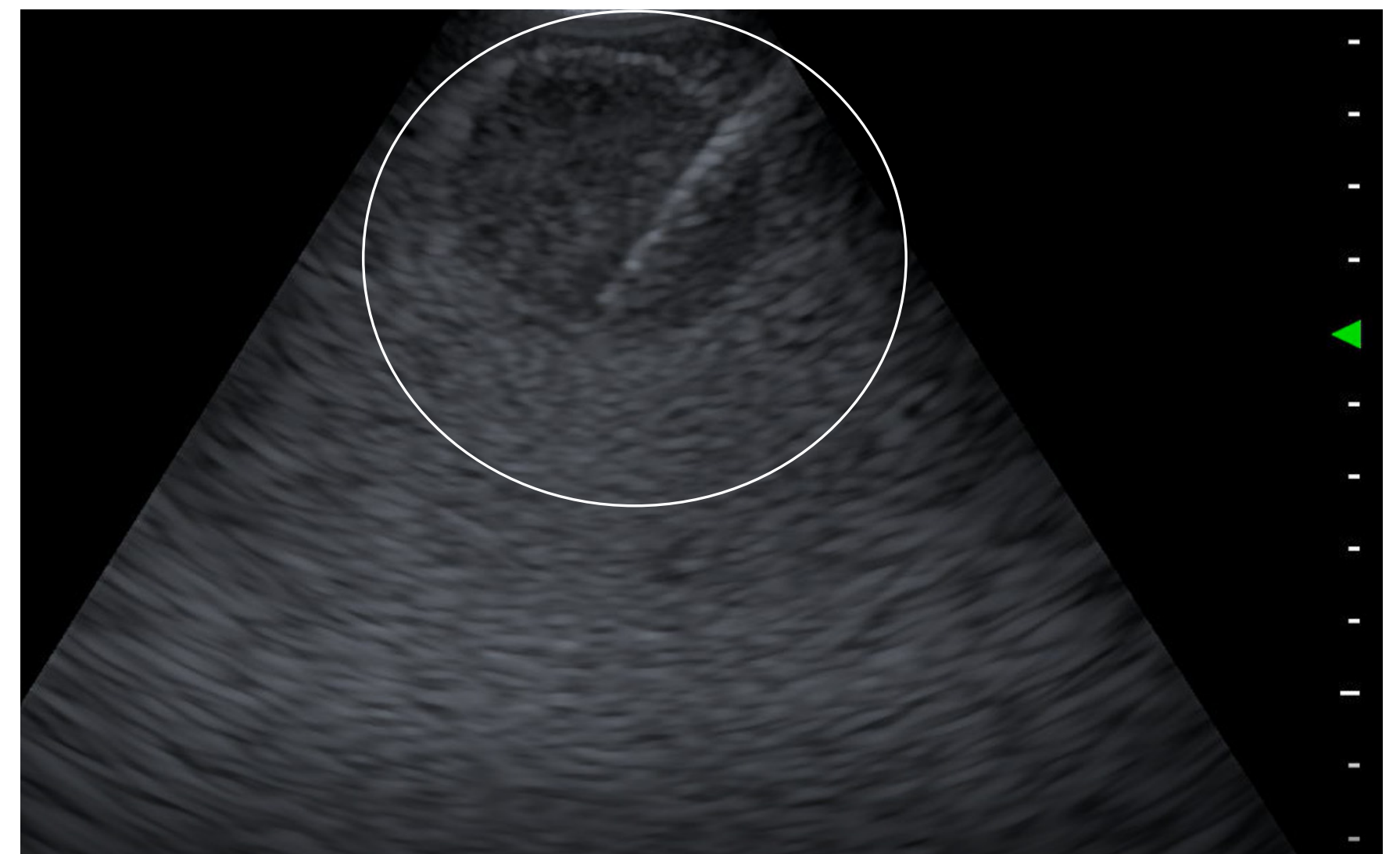
Extended Reach

The BF-UCP190F can reach the segmental and sub-segmental airways of the lung and can enable real-time visualization and sampling in this area.¹



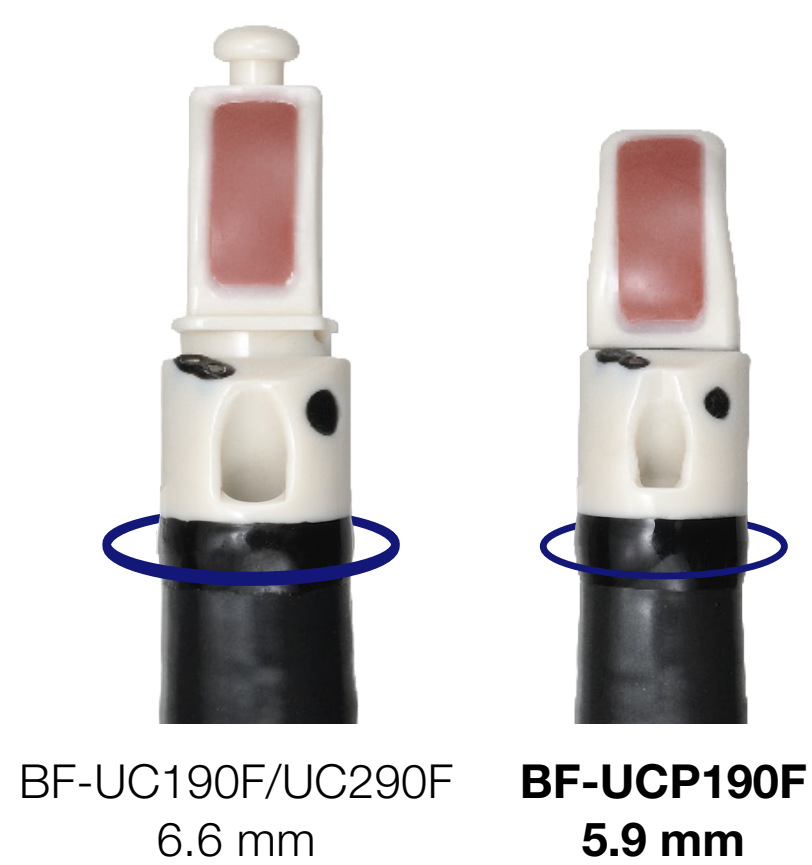
Precision Real-Time Sampling

When paired with an EBUS-TBNA needle, the BF-UCP190F enables real-time visualization and sampling in segmental and sub-segmental lung regions, supporting precise specimen collection for diagnostic assessment.¹



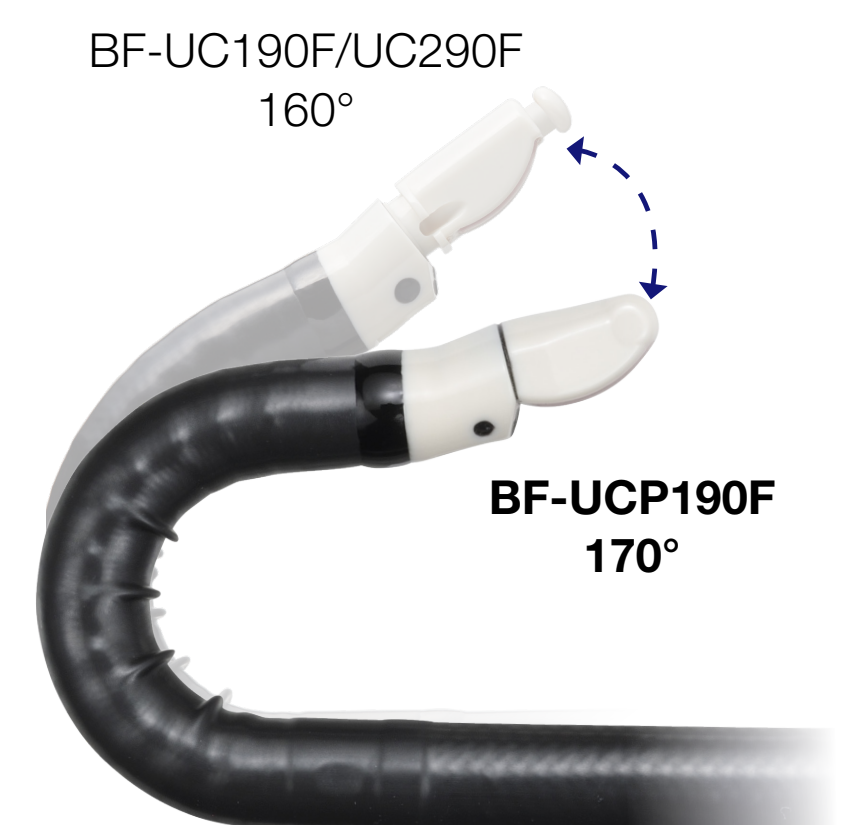
Slim Outer Diameter

With a slim outer diameter of 5.9 mm at the distal end, the BF-UCP190F supports maneuverability to deeper lung regions while maintaining compatibility with a ViziShot 2 25G EBUS-TBNA needle for precise, real-time sampling.¹



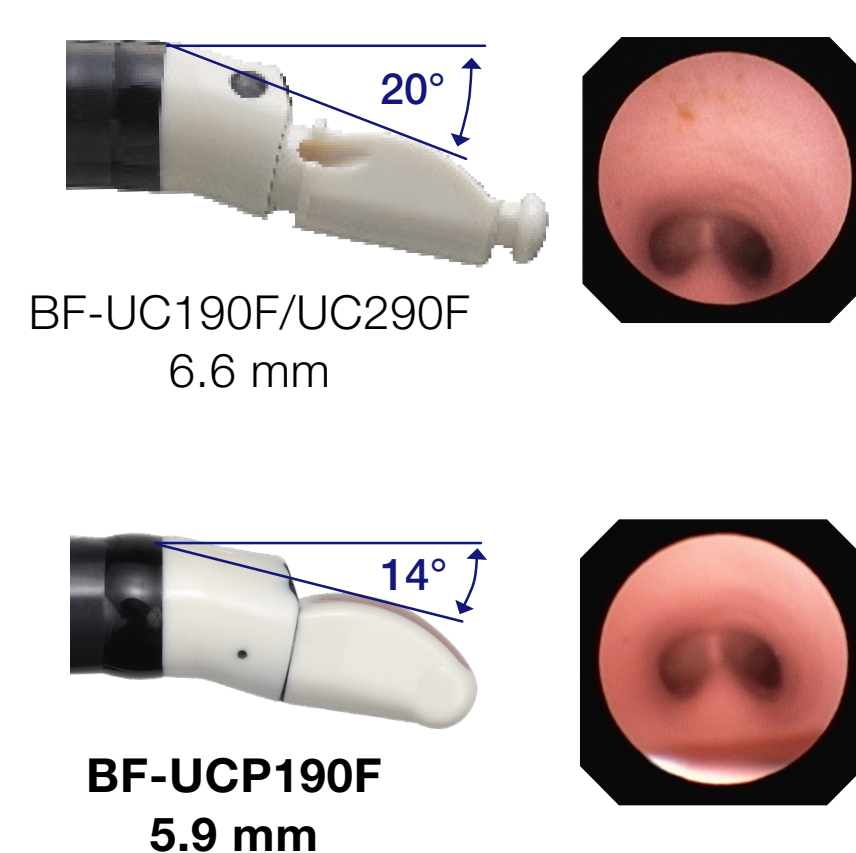
Expanded Access

The BF-UCP190F offers an upward angulation of 170 degrees - 10 degrees wider than the BF-UC190F - to empower access to challenging locations within the lung for precise diagnostic sampling.¹



Simplify Observation and Maneuverability

The BF-UCP190F's shorter distal end and 14° forward oblique view contributes to a more straightforward endoscopic observation and enhanced navigation in the bronchial tree versus the BF-UC190F.¹



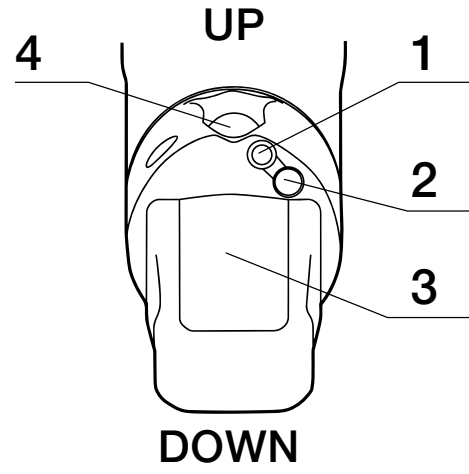
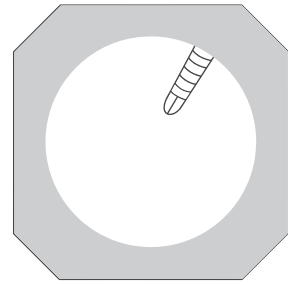
No Balloon Needed

The BF-UCP190F does not require a balloon, which is designed to reduce workflow steps before an EBUS procedure.¹

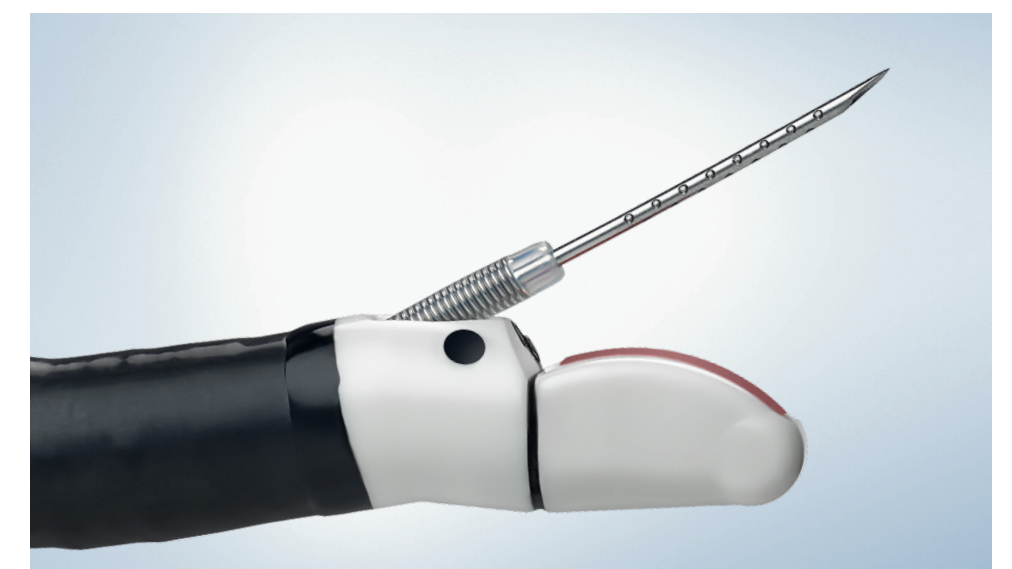


BF-UCP190F

Precision in the Periphery

Specifications		
EVIS EUS Ultrasound Bronchofibervideoscope Olympus BF-UCP190F		
Optical System	Field of view	80°
	Direction of view	14° (Forward oblique)
	Depth of field	2 to 50 mm
Insertion Section	Distal end enlarged	
	1. Objective lens	
	2. Light guide lens	
	3. Ultrasound transducer	
	4. Instrument channel outlet	
	Distal end outer diameter	5.9 mm
	Insertion tube outer diameter	5.7 mm
	Maximum insertion section outer diameter	6.3 mm
	Insertion section working length	600 mm
	Channel inner diameter	1.7 mm
Minimum channel inner diameter	1.6 mm	
Minimum visible distance ²	3 mm	
Instrument Channel	Direction from which EndoTherapy accessories enter and exit the endoscopic image	
Bending Section	Angulation range	UP 170° and DOWN 70°
Total length	890 mm	
Pre-freeze function³	Available	
Electronic zoom function³	Available	
Electronic shutter function³	Available	
Records of endoscope's information³	Available	
NBI observation³	Not compatible	
RDI observation⁴	Not compatible (when using CV-1500) ⁴	
High-frequency treatment	Not compatible	
Laser	Not compatible	

Single Use Aspiration Needle NA-U401SX-4025N (compatible with BF-UCP190F)	
Maximum Insertion Portion Diameter	1.5 mm
Working Length	700 mm
Needle Gauge	25 G
Maximum Needle Length	40 mm
Minimum Working Channel	1.7 mm



1. Takashima Y, Shinagawa N, Shoji T, et al. Evaluating the Efficacy of Thin Convex-probe Endobronchial Ultrasound Bronchoscope in Cadaveric Models. J Bronchology Interv Pulmonol. 2025;32(3):e01015. Published 2025 May 21. doi:10.1097/LBR.0000000000001015
2. Distance from the instrument channel outlet on the distal end of the endoscope.
3. For more details, refer to the instruction manual for the CV-190 or CV-1500.
4. For more details, refer to the instruction manual for the CV-1500.

As medical knowledge is constantly growing, technical modifications or changes of the product design, product specifications, accessories and service offerings may be required.